

Manuale Operativo e D'Installazione

CURTAIN

Sensore da Interno/Esterno
Con lente ad effetto tenda
Curtain **PM**
Sensore Pir +
Sensore Microonda

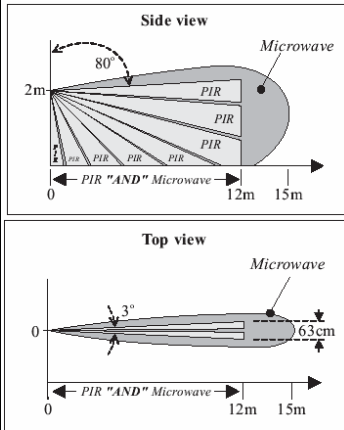
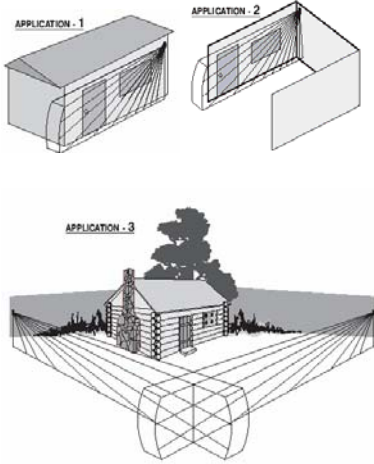
- CARATTERISTICHE**
- Genera un'un'area protettiva stretta di 3°.
 - Tecnologia combinata PIR e microonda con effetto Tenda.
 - Anti mascheramento su PIR grazie ai fasci infrarossi attivi.
 - Sensibilità PIR regolabile.
 - Sensibilità microonda regolabile.
 - Modalità AND/OR selezionabile.
 - Immune ai falsi allarmi.
 - Compensazione di temperatura.
 - Adattamento automatico a rumore di fondo.
 - Analizzatore Analogico-Digitale.
 - Potente microprocessore controllato.
 - Spc - Smart Processing Controller.
 - Livello elevato di immunità di RF/EMI.
 - Due "relè Optomos" per un funzionamento prolungato.
 - Supporto 90° in dotazione.

Vi ringraziamo per la scelta del prodotto MAXIMUM security (1984)Ltd, basato su 20 anni di esperienza nella produzione di sistemi avanzati di sicurezza. Siamo fieri di introdurre a voi il migliore rivelatore di movimento per esterno/interno per la sicurezza industriale, commerciale e residenziale.

Oltre ad una elevata capacità di rilevazione, è dotato di protezione contro il tentativo di danneggiamento o copertura (anti mascheramento) ad impianto disinserito. La protezione contro il mascheramento del rivelatore è realizzata grazie ai fasci infrarossi attivi continui che rilevano qualunque tipo di materiale che possa ostruire il campo visivo del sensore. Inoltre è in grado di rilevare oggetti trasparenti quali i sacchetti plastica o vetro. Il Curtain attiverà un allarme anche se venisse spruzzato con vernice o fosse coperto da un autoadesivo. Il Curtain combina due tecnologie di rilevazione. Infrarosso passivo (PIR) e microonda che verificano l'intrusione insieme. Una procedura avanzata ed unica che gli permette di funzionare nelle condizioni ambientali più difficili e dove è richiesta alta sicurezza e immunità ai falsi allarmi.

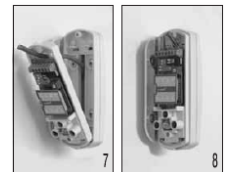
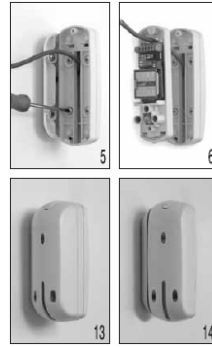
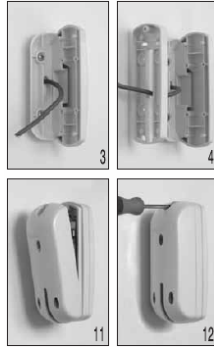
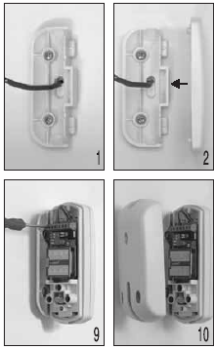
INTRODUZIONE

Il Curtain genera uno schermo protettivo stretto di 3° (come una tenda) per assicurare le aperture e chiusure di porte o finestre. Questo tipo di protezione permette la libera circolazione della gente all'interno dei luoghi protetti senza far scattare l'allarme. E' impermeabile e può essere installato all'aperto o all'interno.

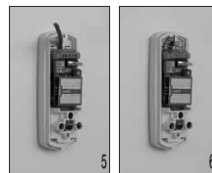
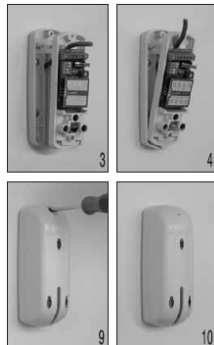
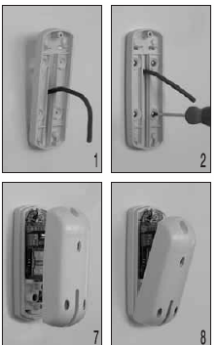


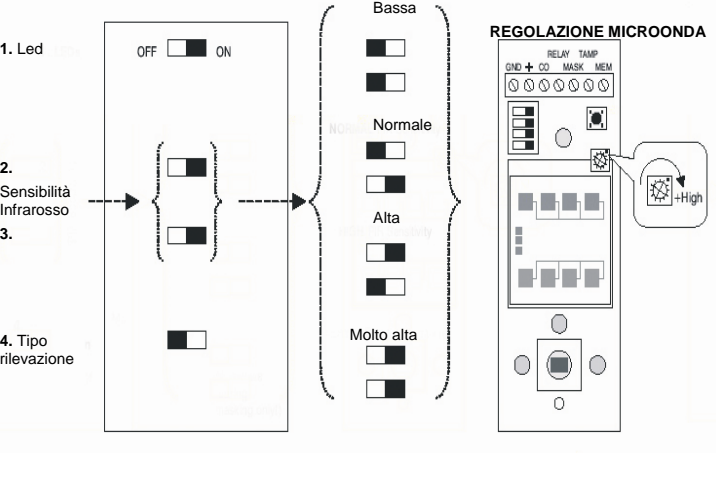
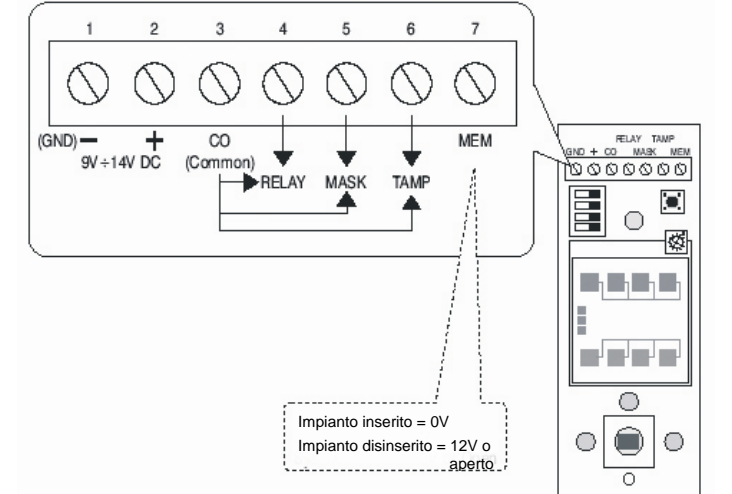
Tipo Rilevazione	Indicazione Led	Stato relè
Allarme	Rosso+Verde lampeggiano insieme	il relè si attiverà per 2 secondi
PIR	Rosso	-
AND	Verde	-
Microonda	OR	Rosso+Verde lampeggiano insieme
Anti-mascheramento	Arancio	Se il mascheramento persiste per più di 90 secondi, il led arancio si accende e il relè si attiverà per 2 secondi o per tutta la durata del mascheramento.

INSTALLAZIONE CON STAFFA A 90°



INSTALLAZIONE SENZA STAFFA A 90°



<p style="text-align: center;">REGOLAZIONE SENSIBILITA' INFRAROSSO E MICROONDA</p> 	<p style="text-align: center;">MORSETTIERA</p> 		
<p style="text-align: center;">SPECIFICHE MORSETTIERA</p> <ul style="list-style-type: none"> - Mors. 1-2 : Morsetti di alimentazione, applicare una tensione da 9 a 14 Vdc. - Mors. 3-4: Contatto a relè N.C. (RELAY) che scatta in caso di allarme. - Mors. 3-5: Contatto a relè N.C. (MASK) che scatta quando c'è un mascheramento del sensore. - Mors. 3-6: Contatto a relè N.C. (TAMP) di protezione che scatta quando viene aperto il coperchio del sensore. - Mors. 7: Questo morsetto serve per attivare o meno la segnalazione di una rilevazione di movimento. Da centrale antifurto bisogna dare " 0 Vdc " a sistema inserito, e " 12 Vdc " o " Niente " a sistema disinserito. Se il sensore rileva un movimento allo spegnimento del sistema si accenderà il led rosso per 30 minuti ad indicare un'intrusione. 	<p style="text-align: center;">ATTIVAZIONE SENSORE</p> <p>Per mettere in funzione il CURTAIN è necessario far analizzare automaticamente le condizioni dell'area di copertura da parte del sensore stesso. Questa operazione è obbligatoria e deve essere effettuata dall'installatore per verificare il corretto funzionamento del mascheramento. Procedura:</p> <ol style="list-style-type: none"> 1. Alimentare il sensore e attendere 1 minuto di pre-riscaldamento e di stabilizzazione. 2. Lasciare attiva la segnalazione del Led DIP switch 1. 3. Chiudere il coperchio del sensore entro 15 secondi. 4. Lasciare libera l'area di lettura del sensore per almeno 1 minuto, per permetterne l'analisi da parte del CURTAIN. <p>Durante questa procedura i led verde e rosso lampeggeranno rapidamente per</p>	<p>circa 30 secondi, si spegneranno per altri 20 secondi circa e poi lampeggeranno per altri 10 secondi.</p> <p style="text-align: center;">TEST ALLARME</p> <p>Camminare davanti l'area di copertura del sensore; si attiverà il contatto d'allarme "RELAY" per 2 secondi e contemporaneamente per la stessa durata i led rosso e verde lampeggeranno simultaneamente.</p> <p style="text-align: center;">TEST ANTI-MASCHERAMENTO</p> <p>A una distanza di circa 10 cm posizionare davanti al sensore un pezzo di carta o qualunque altro oggetto; il led verde comincerà immediatamente a lampeggiare (fino a che l'oggetto rimarrà davanti al sensore). Se l'oggetto rimarrà per più di 90 secondi, il led arancio si accenderà e il relè "MASK" si attiverà per 2 secondi o per tutta la durata del mascheramento.</p>	<p style="text-align: center;">SPECIFICHE TECNICHE</p> <ul style="list-style-type: none"> - Alimentazione: da 9 a 14 Vdc - Assorbimento: 20 mA in standby 30 mA in allarme - Portata relè RELAY: 15 Vdc / 20 mA - Portata relè MASK: 15 Vdc / 20 mA - Portata relè TAMPER: 15 Vdc/20mA - Tempo riscaldamento: 1 minuto - Durata allarme: 2 secondi - Tempo attiv. MASK: oltre 90 secondi - Durata allarme MASK: 2 secondi o tutto il mascheramento - Copertura: 12 m a 3° - Temperatura funz.: da -37 a +70 °C - Frequenza microonda: 24.125 GHz
<p style="text-align: center;">CERTIFICATO DI GARANZIA</p> <p>MAXIMUM Electronics Security (1984) Ltd thanks you for buying its products, which have proven their reliability and effectiveness over many years.</p> <p>To ensure proper operation and functioning of the product and benefit from its features to the utmost, read the Installation & Operating instructions carefully and follow them step by step.</p> <p>MAXIMUM Electronics (1984) Security Ltd (hereinafter – the "Manufacturer") hereby warrants/guarantees the products manufactured by it (hereinafter – "Product" or "Products") against defects in production or in materials discovered during their reasonable use and servicing, in accordance with the Manufacturer's instructions, recommendations and limitations and subject to the provisions of this Certificate of Warranty.</p> <p>This Warranty is for a limited period of 12 months from the last day of the week and the year whose number is printed on the electronic card (PCB) and/or electronically encoded in one of the Product's components. This Warranty is limited to the repair of a defective Product, or its replacement at the Manufacturer's option, during the Warranty period, subject to reasonable use and servicing in accordance with the Manufacturer's instructions, recommendations and limitations.</p> <p>To realize the Warranty rights, the Product must be sent to the Manufacturer securely packaged and accompanied by a document describing the problem, with insurance and freight prepaid by the sender.</p> <p>The Manufacturer's products boast a high standard of reliability, proven in tens of thousands of products over many years. The percentage of problems encountered in them is virtually nil, therefore a Product must be carefully checked (according to the operating instructions) before sending it to the Manufacturer for examination and/or servicing</p>	<p>in the Warranty framework.</p> <p>In the event that the installer and/or user and/or customer and/or operator of a Product (hereinafter – the "Customer") returned the Product to the Manufacturer on the grounds that it is defective and received in exchange from the Manufacturer a functional product, and upon examination the Manufacturer found that the returned Product was not defective – the Customer will be charged the Product's full value as consideration for the resources invested by the Manufacturer in its examination. The Manufacturer shall in no case be liable for damage or loss (including monetary loss), whether direct, indirect, accidental, circumstantial or otherwise, entailed in the dismantling or reinstallation of the Product. In case the Manufacturer decides to replace a returned Product that was found to be defective, the Customer hereby gives its consent to receiving – at no added cost – also a higher version of the Product.</p> <p>This Warranty is not valid in the following cases: incorrect installation, installation and/or operation not in accordance with the Manufacturer's instructions, alteration, misuse, accident, sabotage, repair or servicing by someone other than the Manufacturer. The Customer must take all necessary precautions to prevent and eliminate any discharge of static electricity or other interference that could affect the Product's functioning.</p> <p>This Warranty is exclusive and explicit and replaces any other warranty, commitment or guarantee – whether written, oral or implied. The Manufacturer will in no case be liable toward anyone for a breach of this Certificate of Warranty or of any of its foregoing provisions. This Certificate of Warranty may not be altered, exchanged or expanded, and the Manufacturer does not authorize anyone to do so on its behalf – including any distributor, dealer, agent, representative or employee of the Manufacturer operating by its authority or on assignment from it.</p>	<p>This Warranty applies to the Product only! Any other product, accessory or adjunct used together with the Product (including batteries) will be covered solely by its exclusive warranty, if such exists.</p> <p>The Manufacturer shall in no case be liable for damage or loss, whether direct, indirect, accidental, circumstantial or otherwise, caused by the proper and/or improper functioning of the Product due to use of other products, accessories or adjuncts (including batteries) together with the Product.</p> <p>The Manufacturer does not claim that the Product is immune to malicious neutralization, bypass, sabotage or deception, or that it will prevent in every case death or physical and/or mental injury due to burglary, robbery, fire or the like, or that the Product will provide in all cases adequate and/or suitable warning or protection.</p> <p>The Customer understands that correct installation and maintenance, in accordance with the Manufacturer's instructions, recommendations and limitations, merely reduces the risk of failure to give warning in cases such as burglary, robbery and fire, but in no way ensures or guarantees that such cases will not occur or will not result in death or physical and/or mental injury and/or damage to property.</p> <p>The Manufacturer shall in no case be liable for damage or loss (including death or physical and/or mental injury and/or damage to property), whether direct, indirect, accidental, circumstantial or otherwise, caused through use of and/or reliance upon the Product. In the event that the Manufacturer is held liable, directly, indirectly, circumstantially or otherwise, for any loss or damage according to the terms of this limited Warranty or otherwise (irrespective of its cause or origin), The Manufacturer shall not exceed in no case be liable for death or physical and/or mental injury and/or damage to property and/or loss of any kind, whether direct, indirect, accidental, circumstantial or otherwise, on the grounds that the Product did not operate/function properly and/or as expected and/or according to the description in its specification or in any other documentation. the maximum amount of the Manufacturer's warranty and/or guarantee shall exceed in any case the Product's price, and it shall be payable as</p>	<p>full and final consideration, and not as a penalty, and shall constitute the entire and sole compensation by the Manufacturer. It is hereby clarified that the Warranty under this Certificate of Warranty does not cover anything not explicitly and specifically referred to herein.</p> <p>It is hereby agreed that the Customer waives in advance any claim or contention against the Manufacturer.</p> <p>Should the Customer and/or a person on his/her behalf nevertheless file suit against the Manufacturer, the Customer and/or that person in such case shall bear all their costs and the Manufacturer's costs arising therefrom, including lawyer's fees, and shall indemnify the Manufacturer for the full amount adjudicated against it in a decision, if any, rendered by any court or arbitrator.</p> <p>Warning!</p> <p>The Customer must make sure that the Product meets all his/her requirements, and he/she must comply fully with the installation and operating instructions and check the Product and the entire system at least once a week including under field conditions.</p> <p>For various reasons (but not only those set out below), changes in environmental conditions and/or electric or electronic interference and/or malicious damage to the Product could cause the Product to function in an unforeseen manner.</p> <p>The Customer must take all precautions to ensure his/her own safety and security and that of his/her property.</p> <p>The Customer confirms that he/she read all the conditions of this Certificate of Warranty and he/she agrees thereto.</p> <p>Installation and/or operation of the Product shall be deemed as the Customer's agreement to all the conditions of this Certificate of Warranty.</p>