

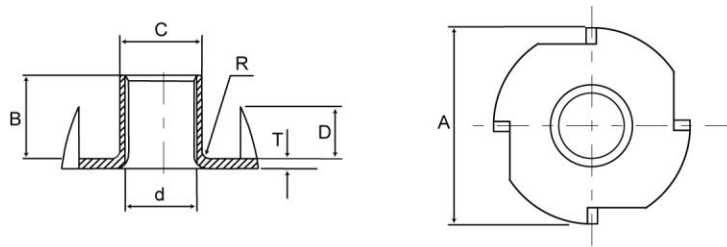
SCHEDA TECNICA - TECHNICAL SHEET

DCG

Dado a griffe
Tee nut

Rev: 01
Pag. 1/1

DATI TECNICI - TECHNICAL DATA



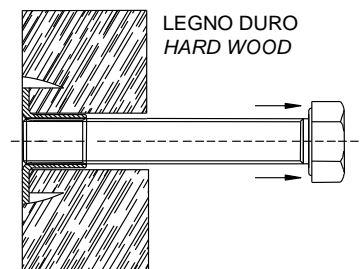
d^{6H}	$A^{\pm 0.3}$ (mm)	$B^{\pm 0.3}$ (mm)	$C^{\pm 0.2}$ (mm)	$D^{\pm 0.5}$ (mm)	$T^{\pm 0.1}$ (mm)	$R^{\pm 0.3}$ (mm)	Cod.
M4	15	7.5	5.0	5	1.0	0.9	22500b04000
M5	15	8	6.5	5	1.0	0.9	22500b05000
M6	17.6	9	8.0	5	1.0	1.6	22500b06000
M8	22	9	9.3	5	1.2	1.7	22500b08000
M10	25	10	11.2	5	1.2	1.8	22500b10000

CARATTERISTICHE PRODOTTO - PRODUCT FEATURES

Tipo Type	Materiale Material	Rivestimento Coating
Dado Nut	acciaio UNI EN 10139 (JS G 3141) steel UNI EN 10139 (JS G 3141)	zincatura bianca $\geq 3\mu\text{m}$ ISO4042 white zinc plated $\geq 3\mu\text{m}$ ISO4042

Caratteristiche tecniche - Technical characteristics

Dado Nut	\varnothing PREFORO \varnothing PILOT HOLE (mm)	COPPIA DI SERRAGGIO ⁽¹⁾ TORQUE ⁽¹⁾ (Nm)	TRAZIONE ROTTURA TENSILE FAILURE (kN)
M4	6	2	4.2
M5	7	3	6.5
M6	9	6	7.0
M8	10	12	7.5
M10	12	14	8.5



1kN = 100 kgf

⁽¹⁾ Coppia di serraggio indicativa valida per accoppiamento con viti TE e rondelle zincate.
Indicative torque valid for use with zinc plated Hex head screws and washers.