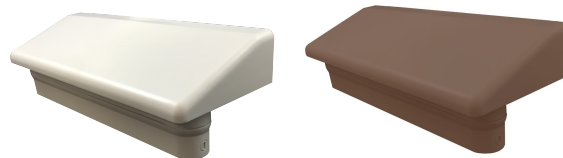
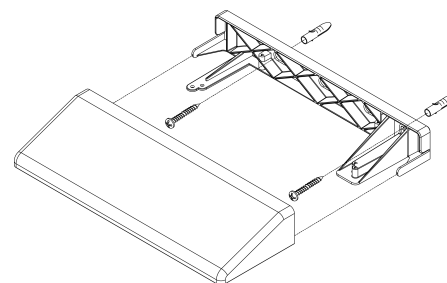


Codice articolo: 1894SBP**Descrizione del prodotto:** Staffa per rilevatore a tenda serie BABY**Caratteristiche principali:** Supporto per fissaggio esterno a protezione di porte o finestre di tutti i rilevatori via filo o via radio Serie BABY. Realizzato in robusto policarbonato resistente agli urti e ai raggi UV e protetto contro l'apertura e lo strappo dal muro.**CARATTERISTICHE TECNICHE**

- Antistrappo: integrato nel rilevatore
- Compatibilità: rilevatori a tenda da esterno
- Fissaggio rilevatore: 2 viti acciaio inox
- Chiusura e fissaggio staffa: 4 viti acciaio inox
- Materiale: policarbonato
- Colore: bianco o marrone
- Dimensioni: 275 x 40 x 94 mm
- Peso: 0,21 kg

**VERSIONI DISPONIBILI**

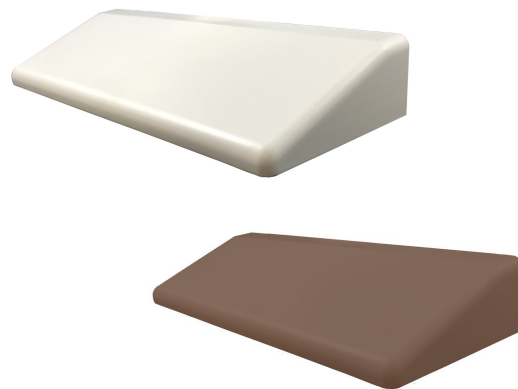
- **1894SBP** • Staffa per rilevatore a tenda, colore bianco
- **1962-SBP-M** • Staffa per rilevatore a tenda, colore marrone

**BS OHSAS 18001:2007**
Occupational Health and
Safety Management System**ISO 14001:2015**
Environmental Management
System**ISO 9001:2015**
Quality Management
System**CI ITPI: 2015**
100% Made in Italy
Certificate**LINCE ITALIA S.p.A.**Via Variante di Cancelliera s.n.c., 00072 Ariccia (RM) Italia
Tel.: +39 06 92928252 - Fax: +39 06 92942586www.lince.net - info@lince.net
MD-03.11 Rev. 6 - Pag.: 1 di 2

Item Code: 1894SBP

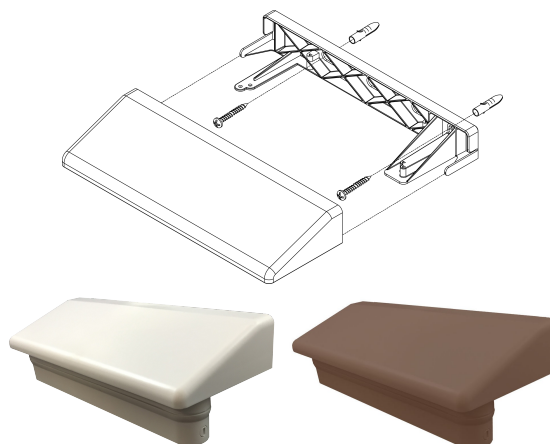
Product description: Bracket for curtain detectors BABY Series

Main features: Bracket for outdoor fixing of all wired or radio detectors of the BABY Series to protect doors or windows. Made of polycarbonate resistant to impact and UV rays and protected against opening and tearing from the wall.



SPECIFICATIONS

- Tamper: integrated with the detector
- Compatibility: outdoor curtain series
- Detector fixing: two stainless steel screws
- Bracket locking and fixing: four stainless steel screws
- Material: polycarbonate
- Colour: white or brown
- Dimensions: 275 x 40 x 94 mm
- Weight: 0.21 kg



AVAILABLE VERSIONS

- **1894SBP** • Bracket for curtain detectors, white colour
- **1962-SBP-M** • Bracket for curtain detectors, brown colour



BS OHSAS 18001:2007
Occupational Health and
Safety Management System

ISO 14001:2015
Environmental Management
System



ISO 9001:2015
Quality Management
System

CI ITPI: 2015
100% Made in Italy
Certificate



LINCE ITALIA S.p.A.

Via Variante di Cancelliera s.n.c., 00072 Ariccia (RM) Italia
Tel.: +39 06 92928252 - Fax: +39 06 92942586

www.lince.net - info@lince.net
MD-03.11 Rev. 6 - Pag.: 2 di 2