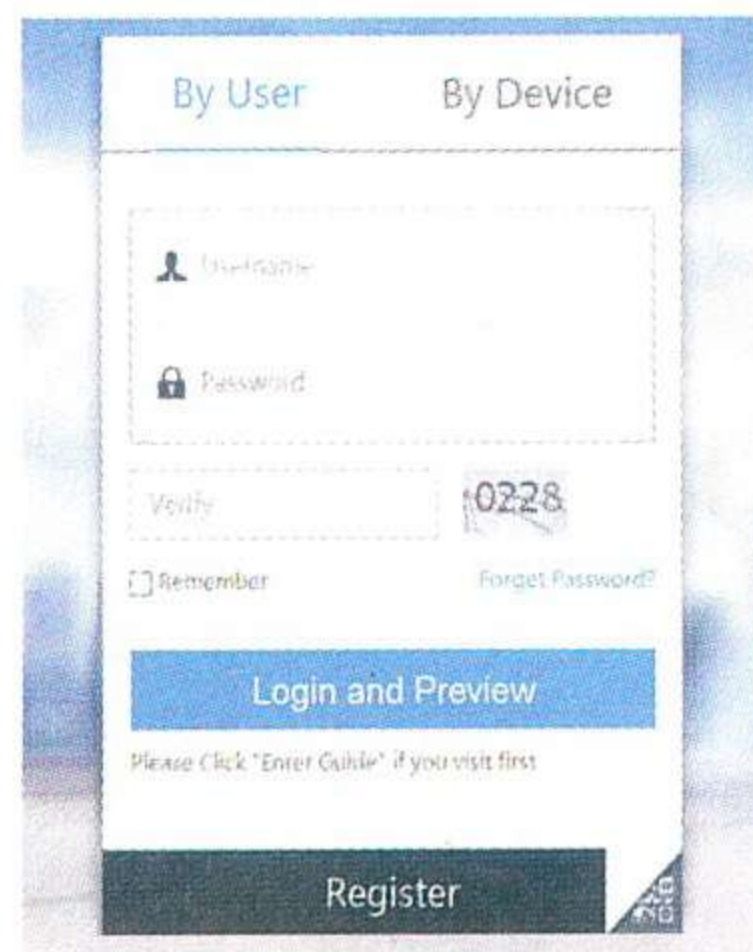


## REMOTE VIEWING THROUGH IE BROWSER

Access [www.xmeye.net](http://www.xmeye.net) on IE browser. Go to 'Device Login'. Enter your serial number. Now you can access remote viewing with playback operation and more.

### REMINDER:

When remote viewing has failed, click the main menu on your left-hand side. Go to System Information > Version Information to check equipment status. If it is searching DNS, please check if your network connection is normal or not and remove the 'Automatically Obtain IPAddress' option. Manually change the IP address of LAN and match the gateway with the routing gateway.



## KEY FEATURES

1. AHD/CVI/TVI/IP/CVBS 5 in 1 Hybrid DVR,4CH
2. H.264
3. Analog Video Input(25fps): 4\*1080N; 4\*960P; 4\*720P
4. Hybrid Video Input(25fps): 2\*960P(Analog) +2\*720P(IP)
5. IP Video Input(25fps): 4\*720P; 4\*1080P; 8\*720P; 8\*1080P; 1\*1080P
6. 4CH Playback 1080N\*25fps
7. Video Input Port:4CH BNC
8. Audio:4ch Input/1ch Output
9. No alarm(can be extended into 4ch alarm input/1ch alarm output,price is higher)
10. Support 1pc HDD(Maximum 6TB)
11. Power Supply:EU Plug 12V/2A
12. Support RS485 PTZ protocol
13. Support 3G,WIFI(should be extended by USB)
14. Network Interface:RJ45 10M/100M
15. USB: 2CH USB 2.0
16. VGA. HDMI HD Output
17. Supports motion detection
18. Supports iCloud
19. PC monitoring software CMS & cellphone monitoring software XMYEYE
20. Supports Iphone, Android
21. Supports remote monitoring

IN CASE OF ANY QUERY/ISSUE WITH THE PRODUCT, PLEASE REACH OUT TO US AT: [SUPPORT@V-TAC.EU](mailto:SUPPORT@V-TAC.EU)

FOR MORE PRODUCTS RANGE, INQUIRY PLEASE CONTACT OUR DISTRIBUTOR OR NEAREST DEALERS. V-TAC EUROPE LTD. BULGARIA, PLOVDIV 4000, BUL.L.KARAVELOW 9B



WEEE Number: 80133970

# INSTALLATION INSTRUCTION

## 5 IN 1 - DVR



**1** YEAR  
WARRANTY\*

## INTRODUCTION & WARRANTY

Thank you for selecting and buying V-TAC product. V-TAC will serve you the best. Please read these instructions carefully before starting the installing and keep this manual handy for future reference. If you have any another query, please contact our dealer or local vendor from whom you have purchased the product. They are trained and ready to serve you at the best. The warranty is valid for 1 year from the date of purchase. The warranty does not apply to damage caused by incorrect installation or abnormal wear and tear. The company gives no warranty against damage to any surface due to incorrect removal and installation of the product. This product is warranted for manufacturing defects only.



## Multi-Language Manual QR CODE

Please scan the QR code to access the manual in multiple languages.

## DOWNLOAD THE APP

- Google Play Store - Search "XMEYE"
- IOS (Apple Store) - Search "XMEYE"
- Android phones and IOS (Iphone) can download by scanning the following QR codes.




ANDROID APP



IOS APP

## REGISTER NEW ACCOUNT

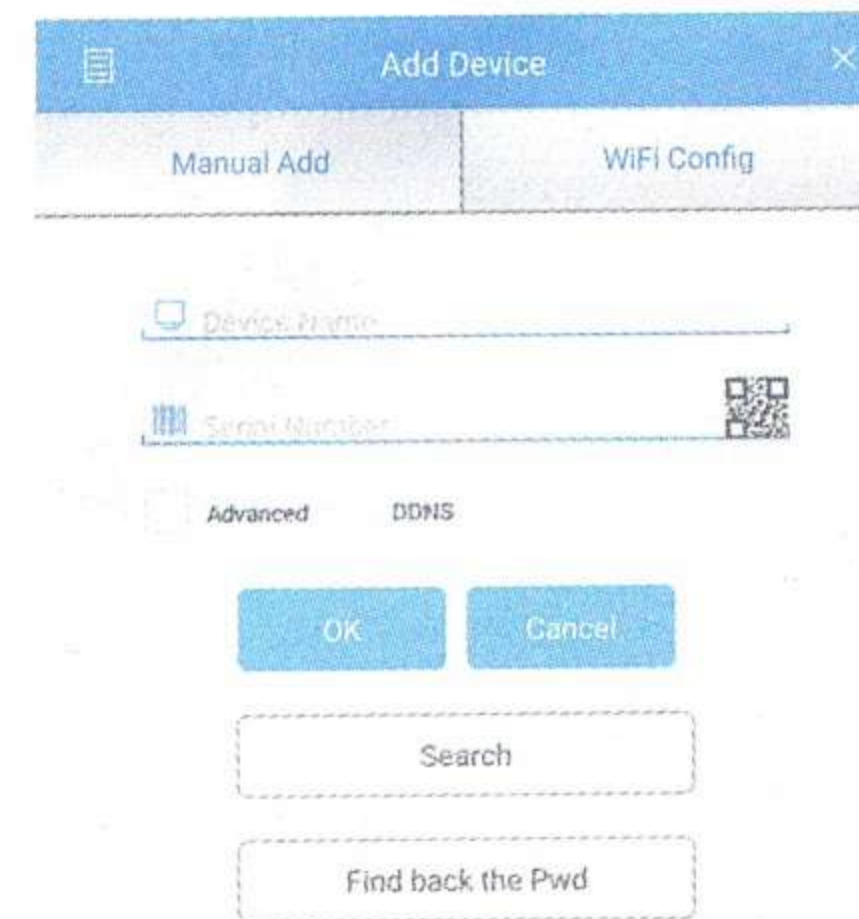
1. Tap on "**Register**" to sign up with your email address as user ID and tap on "**Next**" to get confirmation Code.
2. The APP will send a confirmation code to your email ID. Please confirm the code to complete the registration process. Enter new user ID and password.

Username

Password

After successfully logging in, click the '+' icon on the top right corner to add device 1) automatically by the XMEYE QR Code or 2) manually by entering the device name, username (arbitrary), and the password (default password is empty). Click the device name, and choose your preferred channel.

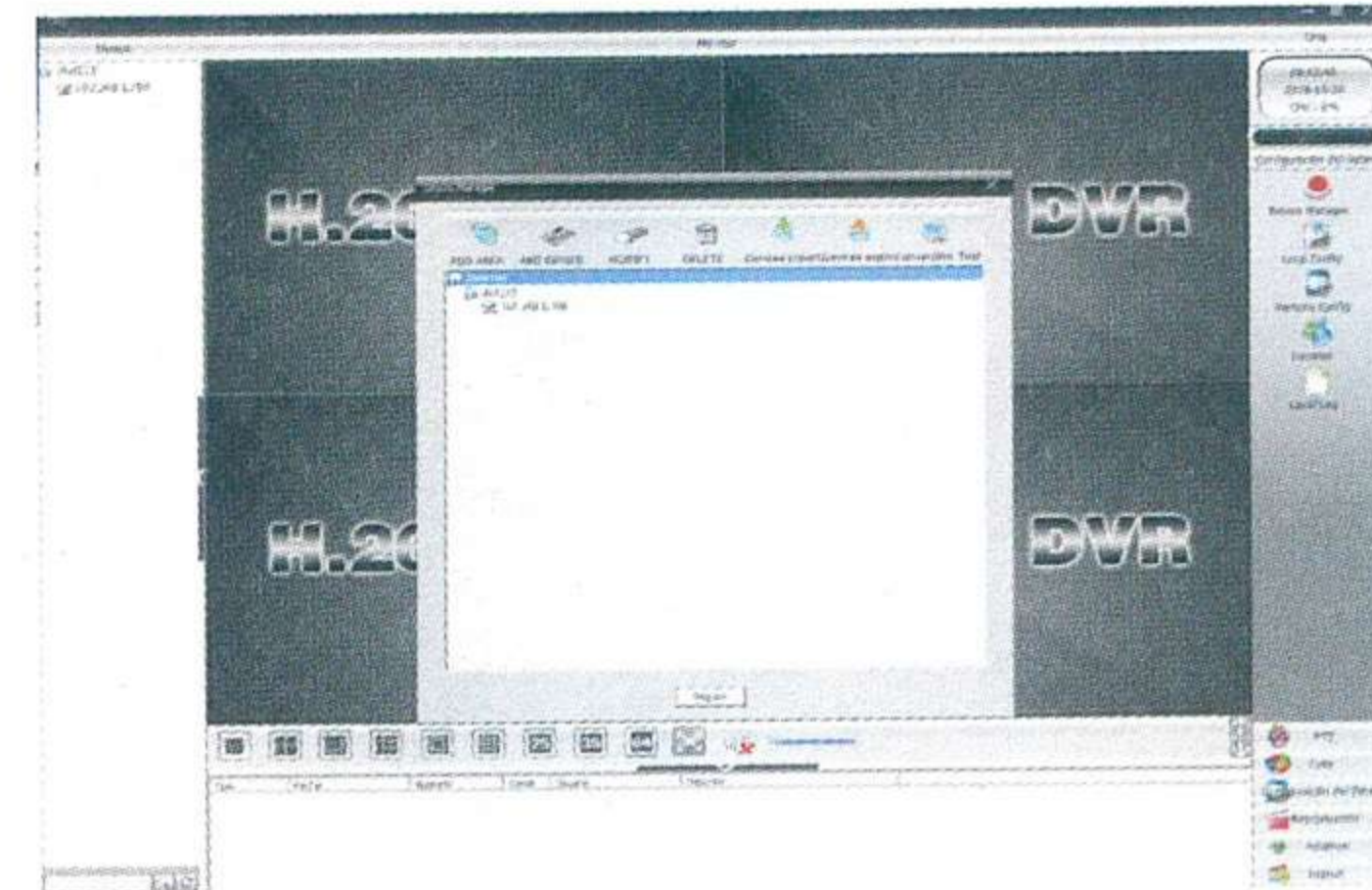


The screenshot shows the 'Add Device' interface with two tabs: 'Manual Add' and 'WiFi Config'. The 'Manual Add' tab is active, showing fields for 'Device Name', 'Serial Number' (with a QR code icon), and 'Advanced' (with a 'DDNS' option). There are 'OK' and 'Cancel' buttons, a 'Search' button, and a 'Find back the Pwd' button.

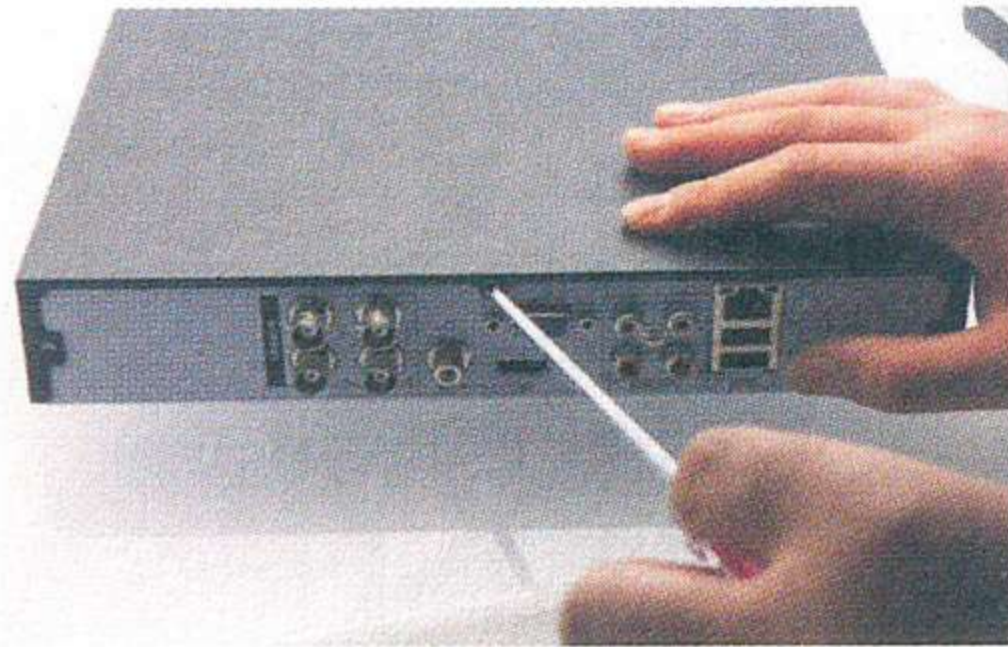


## GUIDE TO MANAGING CMS ON YOUR COMPUTER

Insert the CD installer, download, and install CMS for Windows. Login (default admin + password is empty) and go to System Setting > Monitoring Point Management > Add Area. Select an area then click 'Add Device', then 'Add Settings'. Now, you can see a preview in the software for equipment management. Note: Remote Viewing can only be activated by logging on to the cloud (<http://www.xmeye.net.-main>) and entering the serial number.



## HARD DISK INSTALLATION DIAGRAM



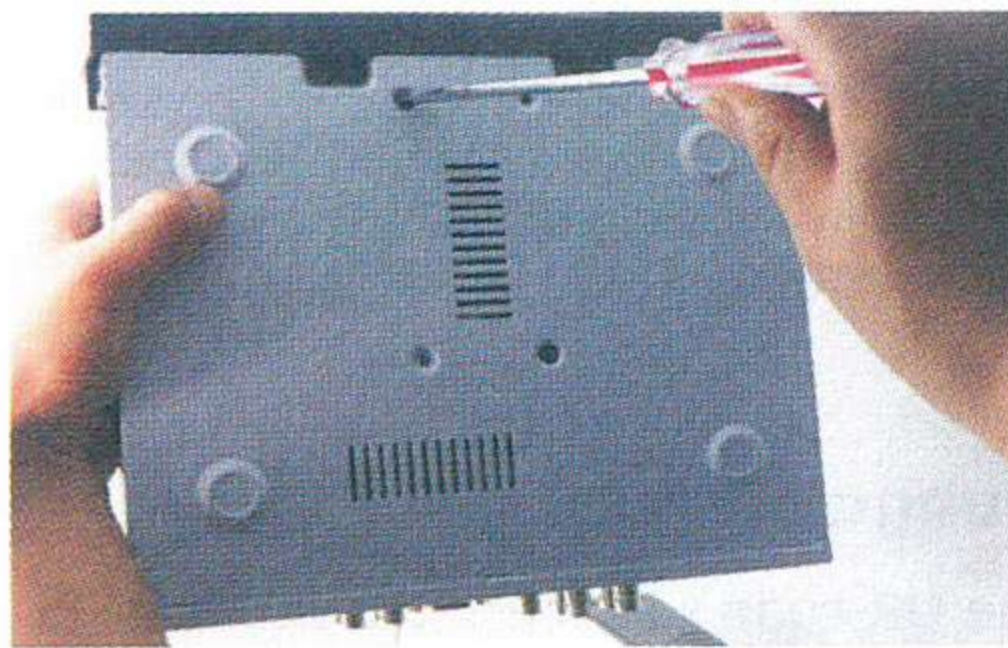
Unscrew and remove recorder's rear panel



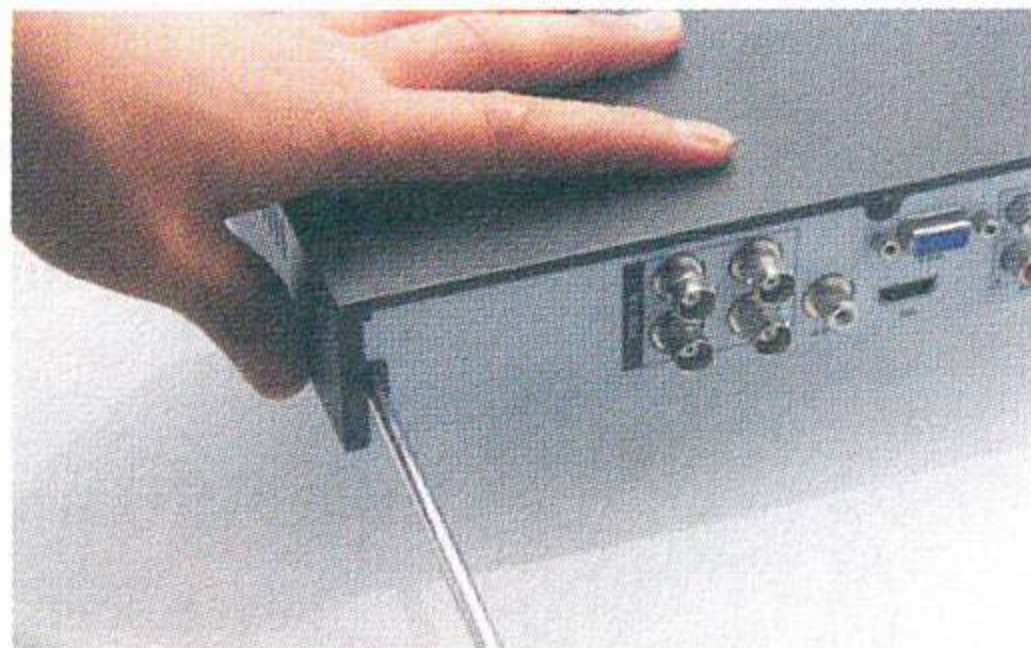
SATA and power cable inside



Connect SATA Cable and power cord securely to hard disk.

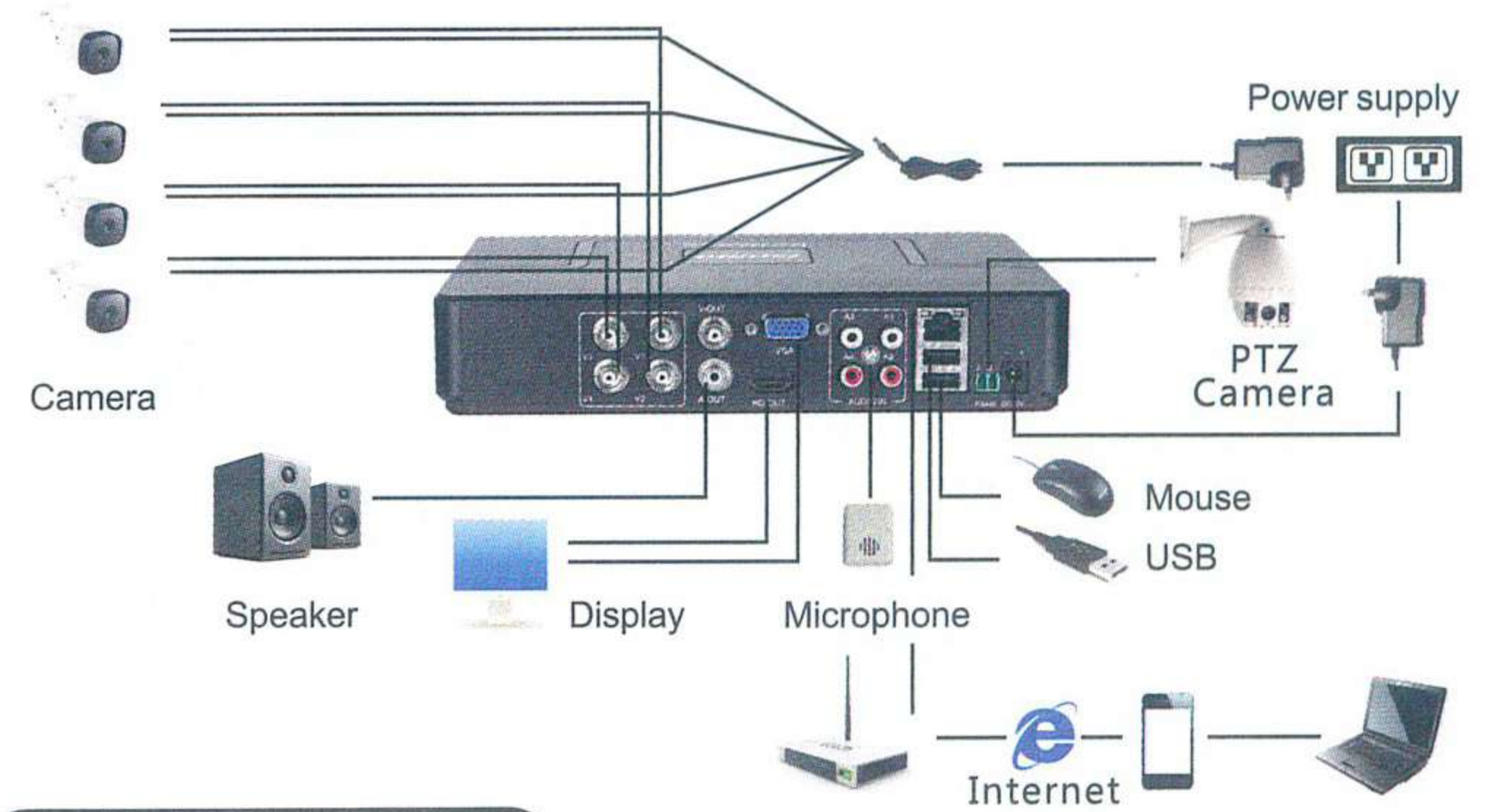


Screw bottom screws from outside of recorder



Recover recorder's cover and re-screw all screws.

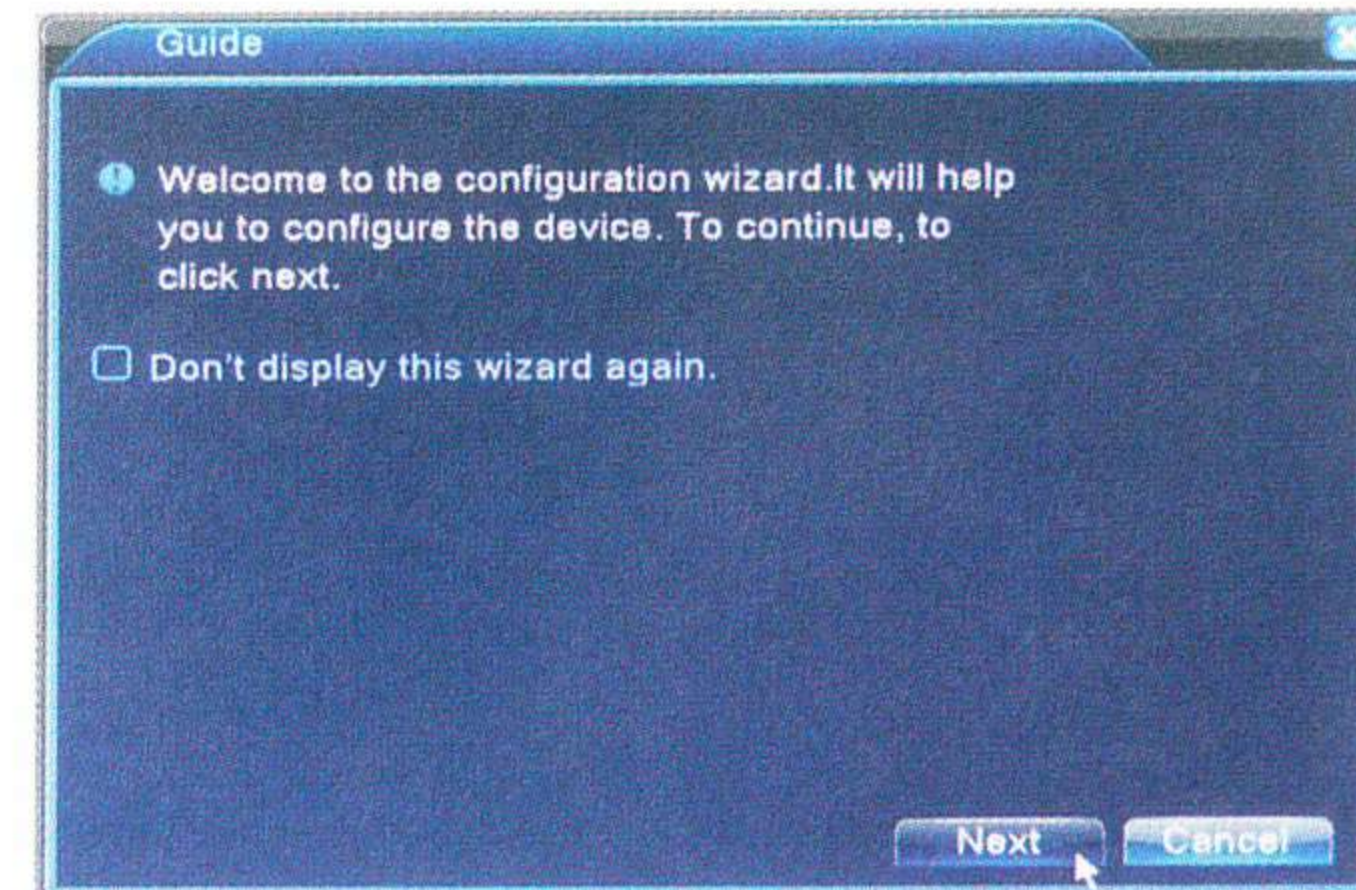
## DVR INSTALLATION DIAGRAM



## MACHINE SETTINGS

### A. GUIDE/STARTUP WIZARD

The system will open "Setting Wizard" screen automatically, for guiding user to setup basic setting.



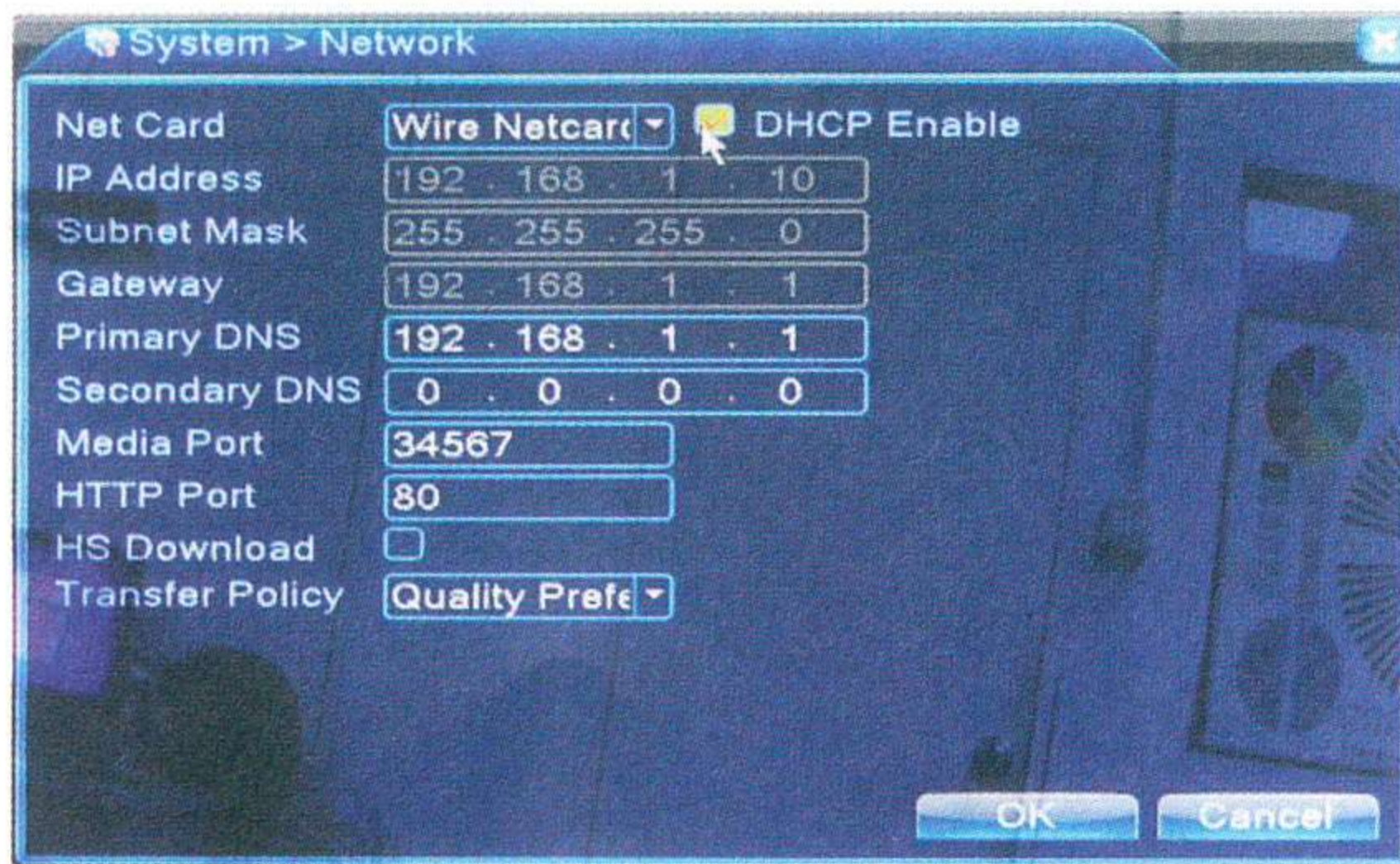
## A. LOGIN PANEL

After connection and powering the recorder, the front panel indicator light will be turned on, and system will display normal boot screen. After completion of loading, login interface will popup. Default account is [admin], password is blank as shown below.



## B. NETWORK SETTING

Please set corresponding network parameters through the following steps: [Main Menu] > [System Settings] > [Network Settings]. Default IP Address: 192.168.1.10. And click OK, system will access to corresponding surveillance video automatically.



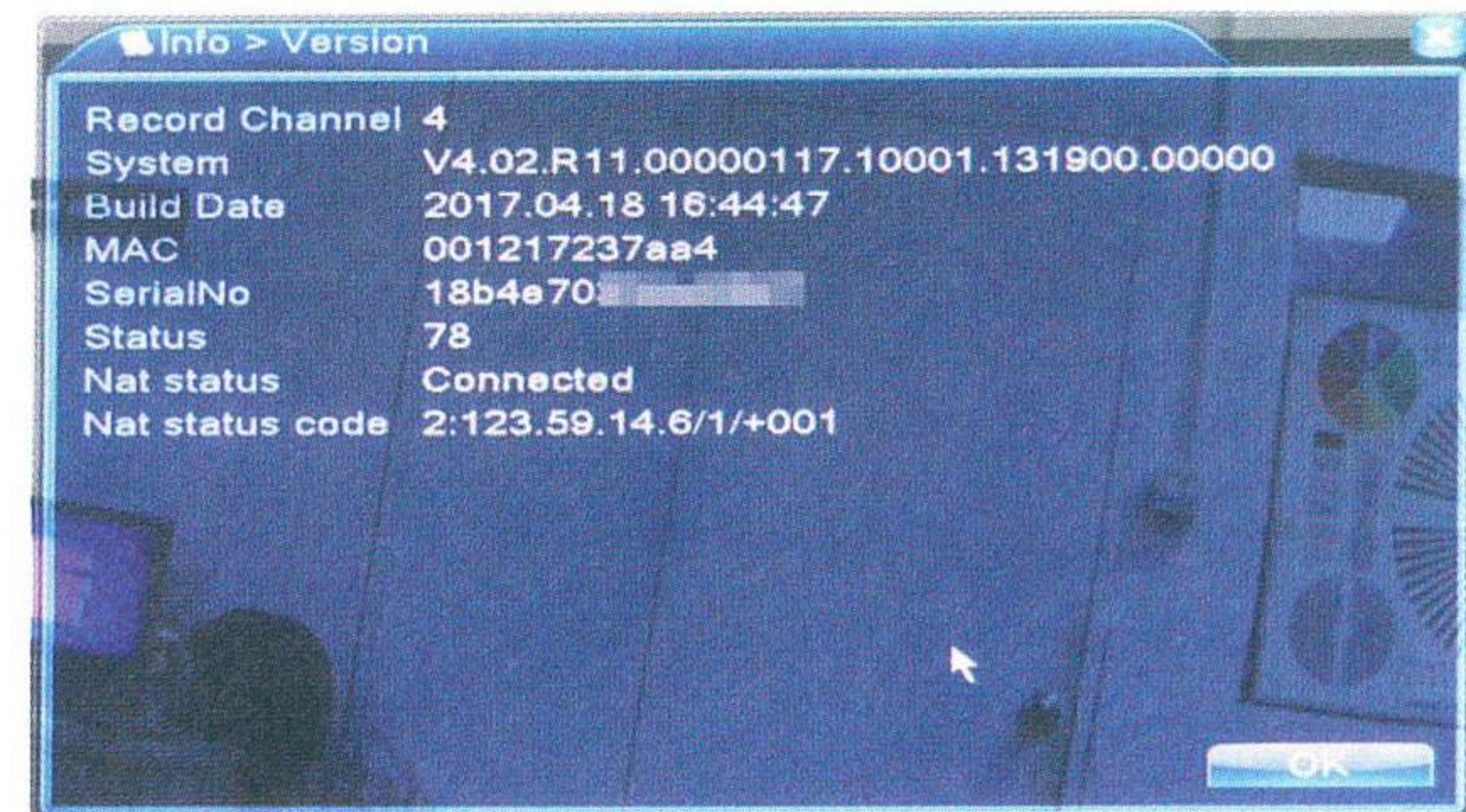
## C. RECORD PLAYBACK

You can enter video playback interface through desktop shortcut menu, or through the following steps: [Main Menu] > [Video Function] > [Record Playback]



## D. VERSION INFORMATION

Right click mouse on main interface, operate as the following: [Main Menu] > [System Information] > [Version Information], then you can search out that recorder's serial number and network state. When NAT shows connection success, then you can view live video by entering serial number on your mobile phone and computer. As shown below:



Click "Search" to search IP cameras



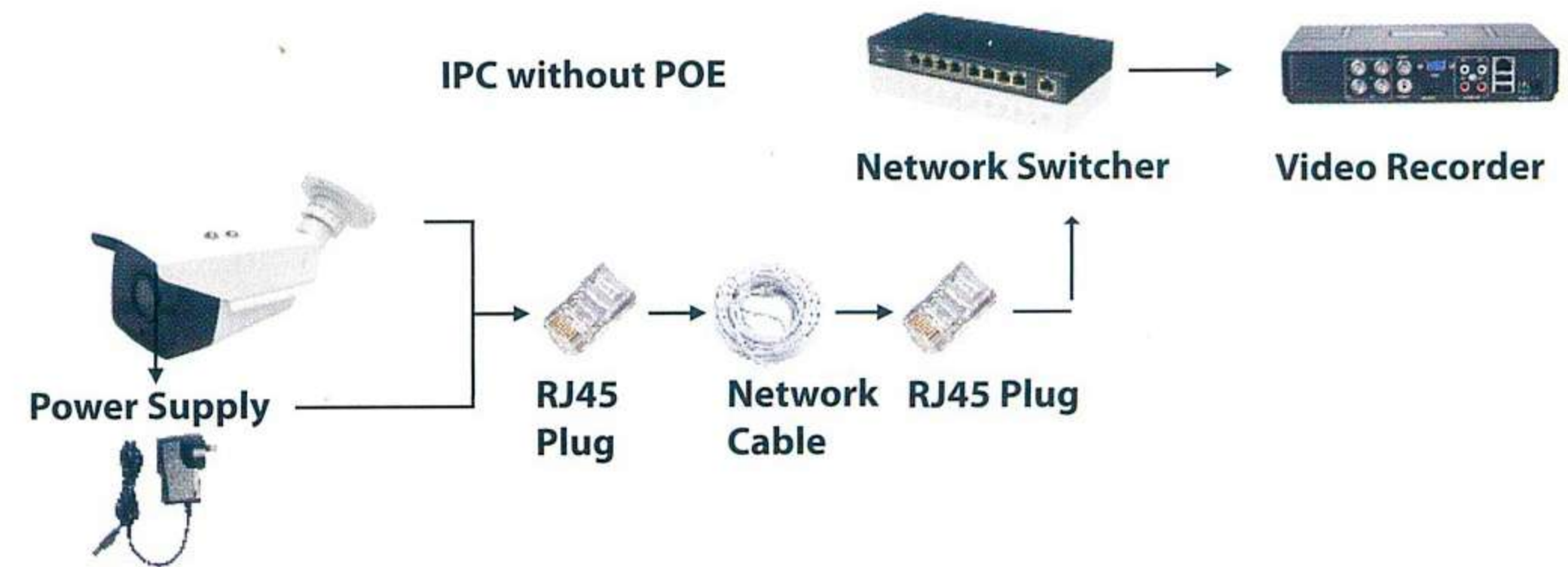
After searching out all devices, double click them to add into DVR, then you'll see all cameras that connected with DVR.



For internet connection and remote viewing details, please refer to the INSTALLATION INSTRUCTION of 5 in 1 - DVR.

## How to use the DVR's IP mode

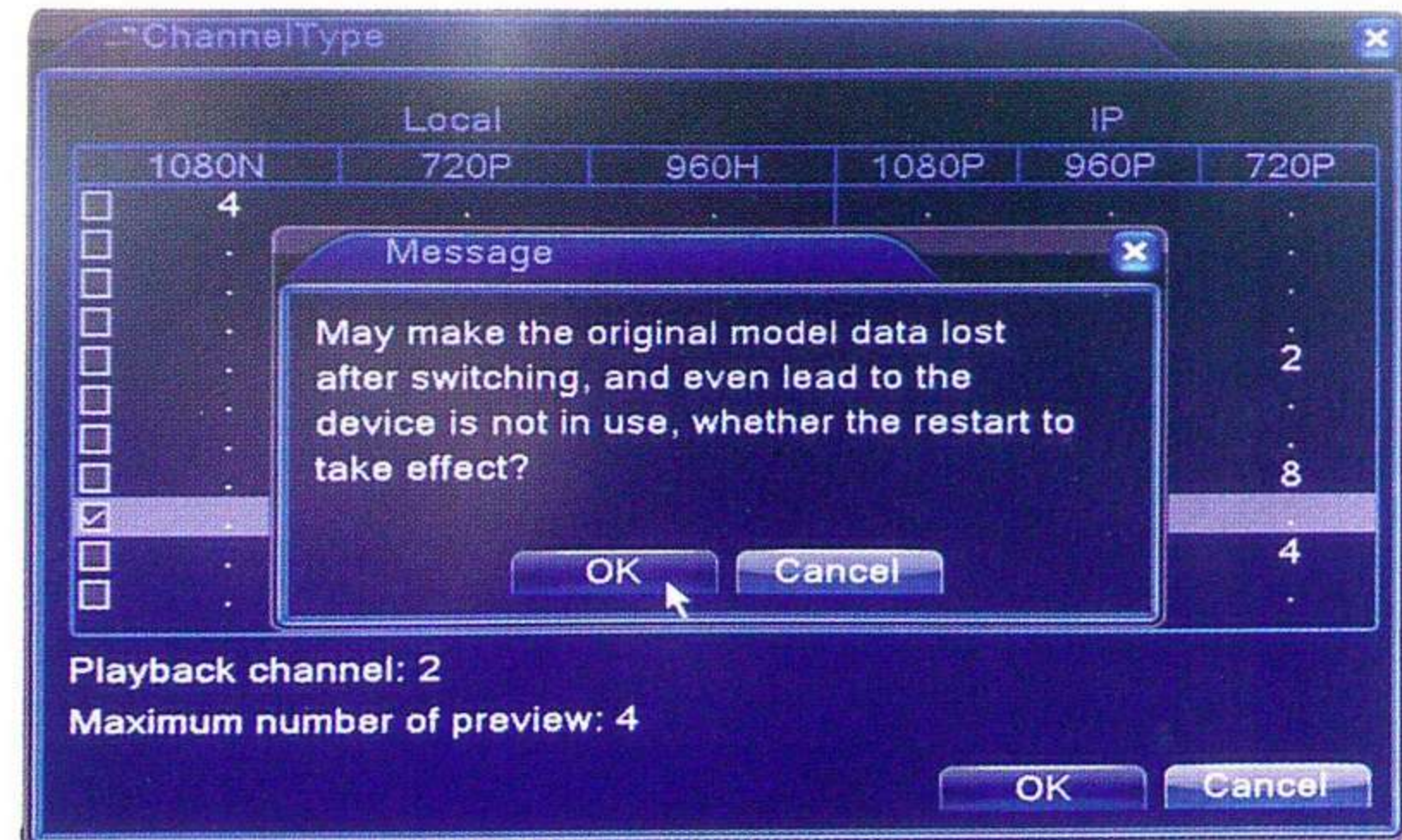
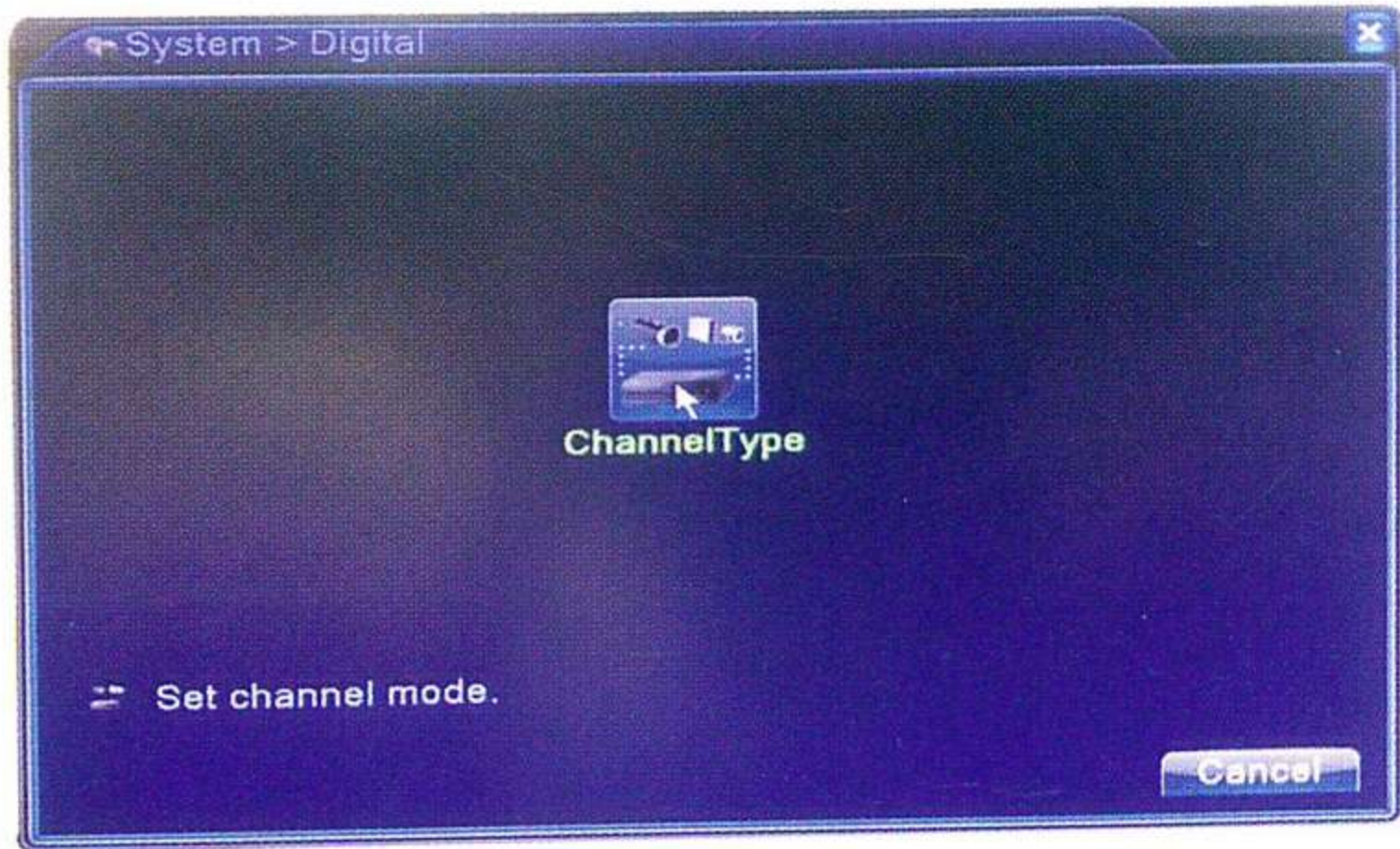
Connect cameras and DVR as below diagram:



To connect IP cameras with this 5 in 1 DVR, please setup DVR to be IP mode as the following way:

Right click DVR mouse > Main Menu > System > Digital > ChannelType





In the coming window, click "+"

√ 8X1080P or 4 X 1080P on the right side in the following interface window.  
 (This model supports connecting maximum 8 pieces of VTAC 1080P IP cameras)

